



TITAN HT

HOT WATER BOILER



Titan HT hot water boilers are the most popular range of water boilers in the region.

- Suitable for fuel oils and gas
- High/ Low or Modulating firing controls
- High efficiency with excellent heat transfer capabilities
- High heating output against volume and weight
- Capable of starting from cold without thermal stress
- Design and manufactured to British Standard specifications

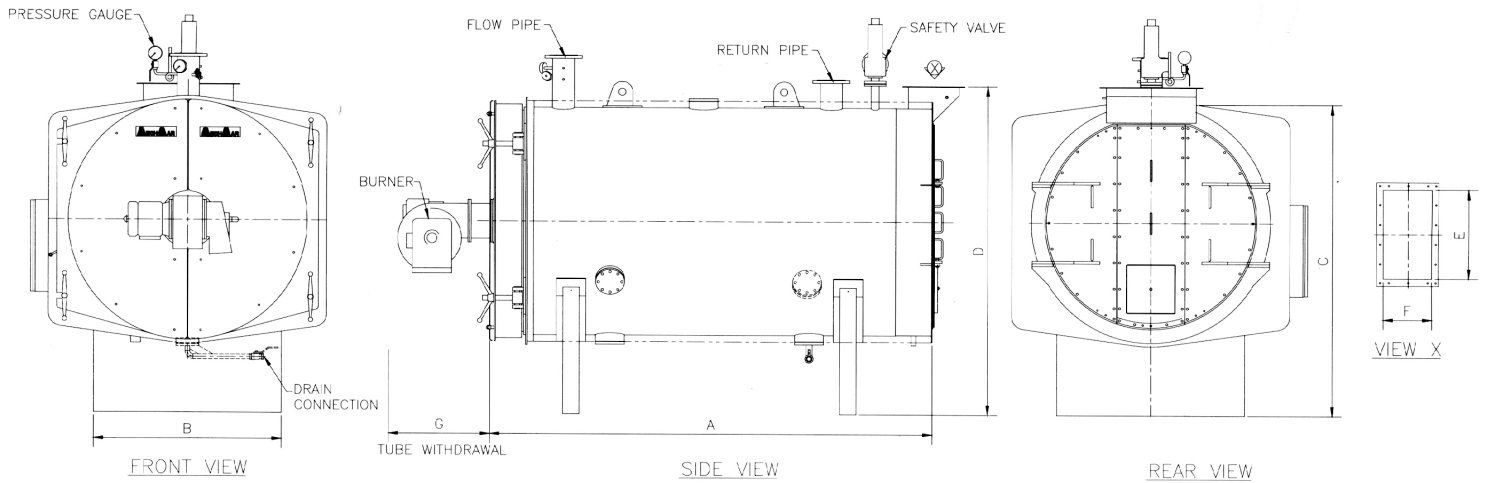
Construction Features

1. Reverse flame, wetback boiler
2. Compact design
3. Easily accessible internals
4. Manufactured under high standards and inspected under Lloyd's Register of Shipping

After Sales Services

1. Backed by a strong team of service technicians
2. Services include commissioning, servicing, breakdowns and routine maintenance
3. Comprehensive spare parts available at local warehouse

| | |
|-------------------------------|-----------------------------|
| Heating Capacity | 117 kW to 5861 kW |
| Working Pressure (max) | 4.48 bar / 10.34 bar |



| BOILER MODEL | | 40 | 65 | 100 | 125 | 160 | 200 | 250 | 325 | |
|-----------------------------|--------|------|------|------|------|------|------|------|------|------|
| OUTPUT | kW | 117 | 190 | 290 | 366 | 470 | 586 | 733 | 1020 | |
| DIMENSION | 'A' | mm | 1959 | 1959 | 1959 | 1947 | 2039 | 2039 | 2331 | 2429 |
| | 'B' | mm | 1130 | 1130 | 1130 | 1280 | 1290 | 1290 | 1360 | 1440 |
| | 'C' | mm | 1325 | 1325 | 1325 | 1459 | 1480 | 1480 | 1565 | 1655 |
| | 'D' | mm | 1365 | 1365 | 1365 | 1570 | 1520 | 1520 | 1605 | 1695 |
| | 'E' | mm | 305 | 305 | 305 | 305 | 380 | 380 | 460 | 460 |
| | 'F' | mm | 178 | 178 | 178 | 178 | 205 | 205 | 215 | 215 |
| | 'G' | mm | 2500 | 2500 | 2500 | 2500 | 2600 | 2600 | 2850 | 2900 |
| FLOW PIPE CONNECTION (NB) | mm | 100 | 100 | 100 | 100 | 100 | 100 | 100 | 125 | |
| RETURN PIPE CONNECTION (NB) | mm | 100 | 100 | 100 | 100 | 100 | 100 | 100 | 125 | |
| SAFETY VALVE (NB) | mm | 15 | 20 | 25 | 25 | 25 | 32 | 32 | 32 | |
| DRY WEIGHTS (approx.) | kg | 1745 | 1745 | 1780 | 1780 | 2345 | 2345 | 2740 | 3135 | |
| WATER CAPACITY (approx.) | litres | 760 | 760 | 760 | 760 | 980 | 980 | 1100 | 1500 | |

| BOILER MODEL | | 350 | 400 | 500 | 650 | 800 | 1000 | 1200 | 2000 |
|-----------------------------|--------|------|------|------|------|------|------|------|-------|
| OUTPUT | kW | 1026 | 1172 | 1465 | 1905 | 2345 | 2931 | 3517 | 5862 |
| DIMENSION | 'A' | mm | 2519 | 2519 | 2779 | 3086 | 3444 | 3800 | 4730 |
| | 'B' | mm | 1490 | 1490 | 1570 | 1770 | 1900 | 2100 | 2741 |
| | 'C' | mm | 1705 | 1705 | 1850 | 2202 | 2205 | 2320 | 2865 |
| | 'D' | mm | 1745 | 1745 | 1890 | 2105 | 2245 | 2360 | 3067 |
| | 'E' | mm | 460 | 460 | 560 | 630 | 770 | 1010 | 1222 |
| | 'F' | mm | 300 | 300 | 300 | 330 | 330 | 400 | 538 |
| | 'G' | mm | 3020 | 3020 | 3280 | 3580 | 4000 | 4300 | 5700 |
| FLOW PIPE CONNECTION (NB) | mm | 125 | 125 | 150 | 150 | 150 | 200 | 200 | 200 |
| RETURN PIPE CONNECTION (NB) | mm | 125 | 125 | 150 | 150 | 150 | 200 | 200 | 200 |
| SAFETY VALVE (NB) | mm | 40 | 40 | 50 | 50 | 50 | 65 | 65 | 100 |
| DRY WEIGHTS (approx.) | kg | 3135 | 3620 | 4322 | 4799 | 5907 | 8000 | 9000 | 12245 |
| WATER CAPACITY (approx.) | litres | 1500 | 1600 | 2000 | 2000 | 5062 | 5590 | 6410 | 9650 |

SALES OFFICE:



MECHMAR (PTE) LTD
 56, Kian Teck Road, Singapore 628791
 Tel: +65 6268 3048 Fax: +65 6261 4049
 Email: mechmar@singnet.com.sg
 www.mechmar.com.sg



MECHMAR BOILERS SDN BHD a wholly owned subsidiary of **MECHMAR CORPORATION (M) BERHAD**, the market leader in Malaysia for boiler manufacturing achieved yet another distinction with the award of ISO 9002 certification Lloyd's Registration Quality Assurance making it the first boiler manufacturing company in Malaysia to attain this recognition.

With Lloyd's Class I certification for its product and ISO 9002 certification for its quality management system, **MECHMAR BOILERS SDN BHD** is now among the elite group of boiler manufacturing company in the world. For its high quality workmanship and consistency in quality, **MECHMAR BOILERS SDN BHD** is already a holder of CLASS I fabricator licence for pressure vessel manufacturing from Lloyd's Register of Shipping since 1985.

MECHMAR BOILERS SDN BHD started operation at Lot 14, Jalan Timah, Pasir Gudang Industrial Estate, Johore in 1977 and to date have produced more than 3000 units of boilers ranging from 500 lb to above 132,000 lb capacity of steam per hour. It also manufactures Hot Water Boilers, Thermal Fluid Heaters and other pressure vessel.

The products are developed and marketed by **MECHMAR COCHRAN BOILERS (M) SDN BHD**, another wholly owned subsidiary of **MECHMAR CORPORATION (M) BHD**.

MECHMAR COCHRAN BOILERS (M) SDN BHD markets a wide range of boilers, thermal oil heaters, steam plant and power plant installation. It operate from offices and service centres in Shah Alam, Johore ann Prai to ensure excellent after sales service and prompt supply of spares.



TITAN HT

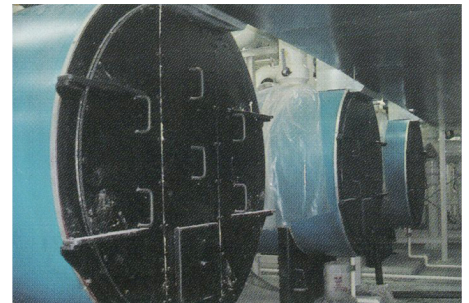
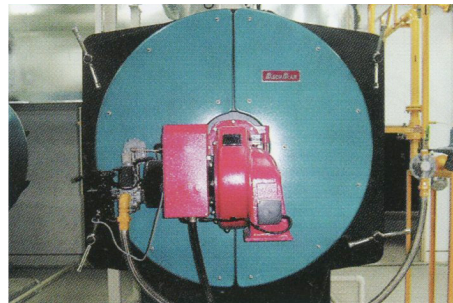
Hot Water Boiler



The HT Model is built to conform to BS2790 or any other international standards on special request.

The Boiler adopts the reversal-flame principle of combustion where the hot gasses make two passes within the pressurised combustion chamber and the third (final) pass through the fire-tubes to exit out to the chimney.

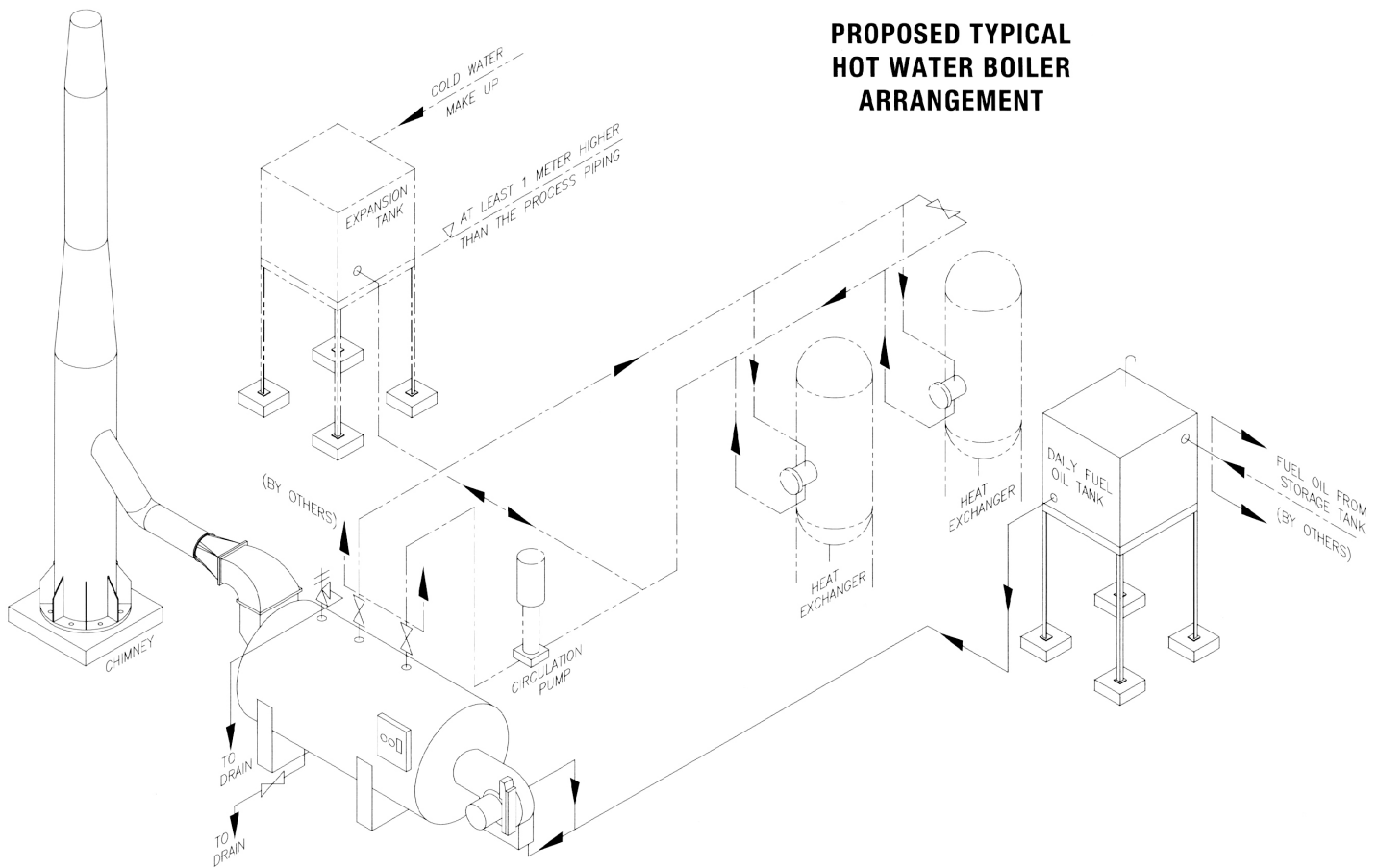
The combustion chamber is supported by stay bars at its rear end. It stands clear of the boiler drum end plate, thus giving rise to the wet-back design. The design feature not only increases the heating surface of the boiler but also keeps refractory works to a minimum.



TYPICAL APPLICATIONS

Hotels, laundries, industrial heating plants where a copious supply of hot water at constant temperature is required.

PROPOSED TYPICAL HOT WATER BOILER ARRANGEMENT



FUEL SAVING

- Compactness in construction reduces fuel consumption in warming boiler to working temperature.
- High thermal efficiency in the reversal flame principle of combustion, averaging 83% when burning fuel oil.

VERSATILITY

- Fully automatic operation.
- Rapid heating for instant hot water supply following overnight stoppage.
- No thermal stress effects as boiler is fully flooded and permits overall uniform expansions.

BOILER CONTROLS

ELECTRICAL

The electrical controls are mounted in a control panel fixed on the side of the boiler and carries the burner control equipment, circulation water pump controls, lockout reset, indicating lights for various starters, alarms, fuses and incoming mains isolator switch.

WATER LEVEL

A flow-switch ensures that the boiler is fully flooded during operation.

TEMPERATURE CONTROL

One combined control and safety thermostat to control the maximum temperature of hot water.

BURNER

Fully automatic forced draught type liquid or gaseous fuel burner with ON/OFF or High/Low operation with electronic ignition.

OTHER DISTINCT FEATURES

- Hinged front door on which burner is mounted and which can be opened easily for quick fire-side inspection.
- Low installation cost.
- Compactness in construction saves valuable building space.
- Suitable for liquid or gaseous fuel.
- Easy to clean, inspect and repair due to simplicity in construction.